

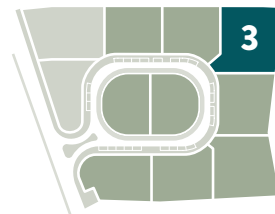


A. NUNES DA SILVA  
ARQUITECTOS & ASSOCIADOS



# Villa Marinha

CASCAIS



**Arquitetura**  
*Architecture*

**Piso 0 + Jardim**  
*Ground Floor + Garden*

**Lote 3**  
*Lot 3*



Meramente indicativo, não vinculativo.  
*Merely indicative and non-binding.*

Um Empreendimento  
*A Development By*

**VISION**  
REAL ESTATE SOLUTIONS

[www.villamarinha.pt](http://www.villamarinha.pt)  
**T. (+351) 213 163 210**  
**E. [agp@visionres.pt](mailto:agp@visionres.pt)**

[WWW.VISIONRES.PT](http://WWW.VISIONRES.PT)

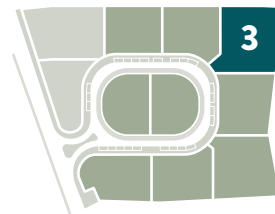


A. NUNES DA SILVA  
ARQUITECTOS & ASSOCIADOS



# Villa Marinha

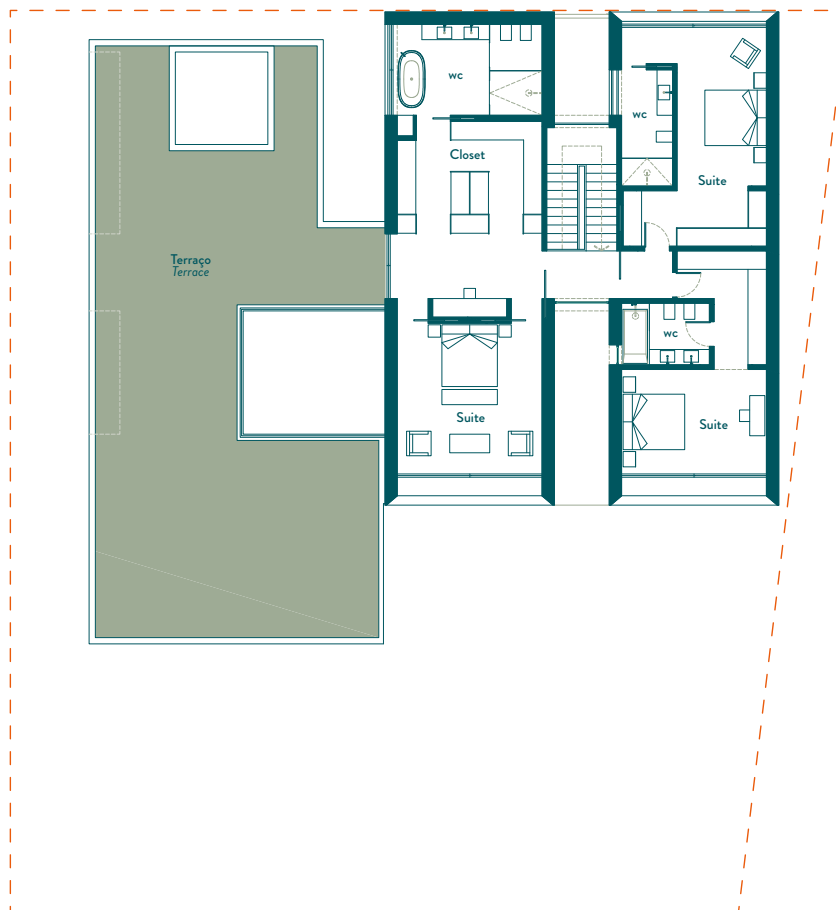
CASCAIS



**Arquitetura**  
*Architecture*

**Piso 1**  
*1<sup>st</sup> Floor*

**Lote 3**  
*Lot 3*



Meramente indicativo, não vinculativo.  
*Merely indicative and non-binding.*

Um Empreendimento  
*A Development By*

**VISION**  
REAL ESTATE SOLUTIONS

[www.villamarinha.pt](http://www.villamarinha.pt)  
**T. (+351) 213 163 210**  
**E. [agp@visionres.pt](mailto:agp@visionres.pt)**

[WWW.VISIONRES.PT](http://WWW.VISIONRES.PT)

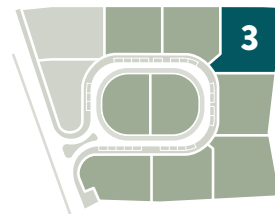


A. NUNES DA SILVA  
ARQUITECTOS & ASSOCIADOS



# Villa Marinha

CASCAIS



**Arquitetura**  
*Architecture*

**Cave**  
*Basement*

**Lote 3**  
*Lot 3*



Meramente indicativo, não vinculativo.  
*Merely indicative and non-binding.*

Um Empreendimento  
*A Development By*

**VISION**  
REAL ESTATE SOLUTIONS

[www.villamarinha.pt](http://www.villamarinha.pt)  
T. (+351) 213 163 210  
E. [agp@visionres.pt](mailto:agp@visionres.pt)

[WWW.VISIONRES.PT](http://WWW.VISIONRES.PT)